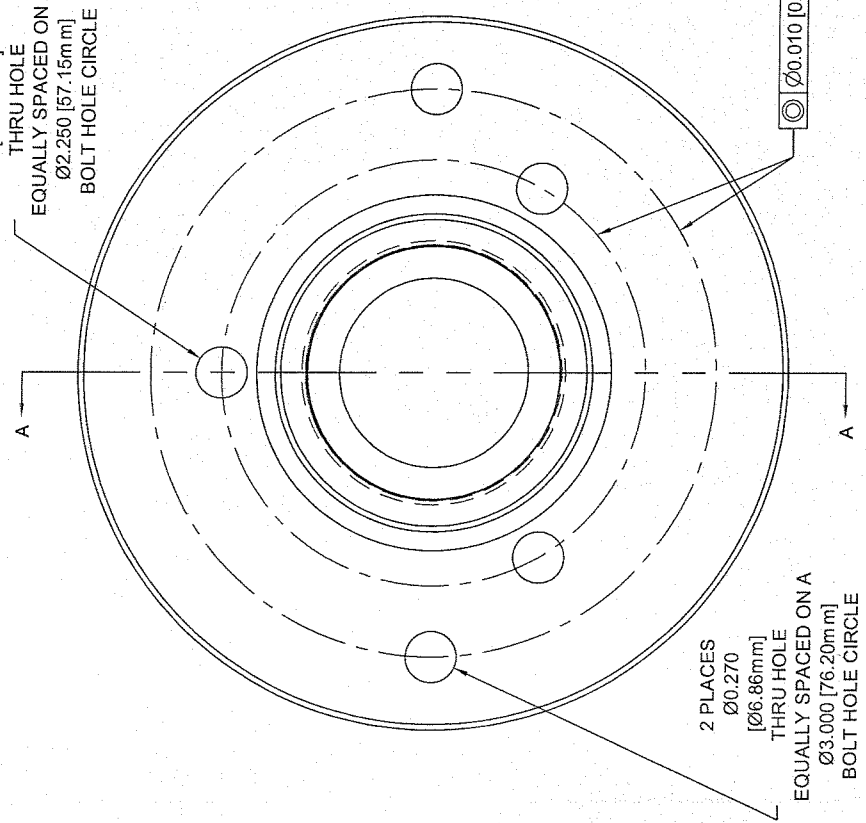


APPROVED VENDOR LIST		REVISION RECORD		REQ.			
VENDOR	DATE	APPROVED BY	DATE	SYM	DR.	CK.	BY
305	7-02-12	M.M.					
268	8-20-11	M.M.					

3 PLACES
Ø0.270
[Ø6.86mm]
THRU HOLE
EQUALLY SPACED ON A
Ø2.250 [57.15mm]
BOLT HOLE CIRCLE



2 PLACES
Ø0.270
[Ø6.86mm]
THRU HOLE
EQUALLY SPACED ON A
Ø3.000 [76.20mm]
BOLT HOLE CIRCLE

63/ALL SURFACES

MATERIAL: ALUMINUM ALLOY

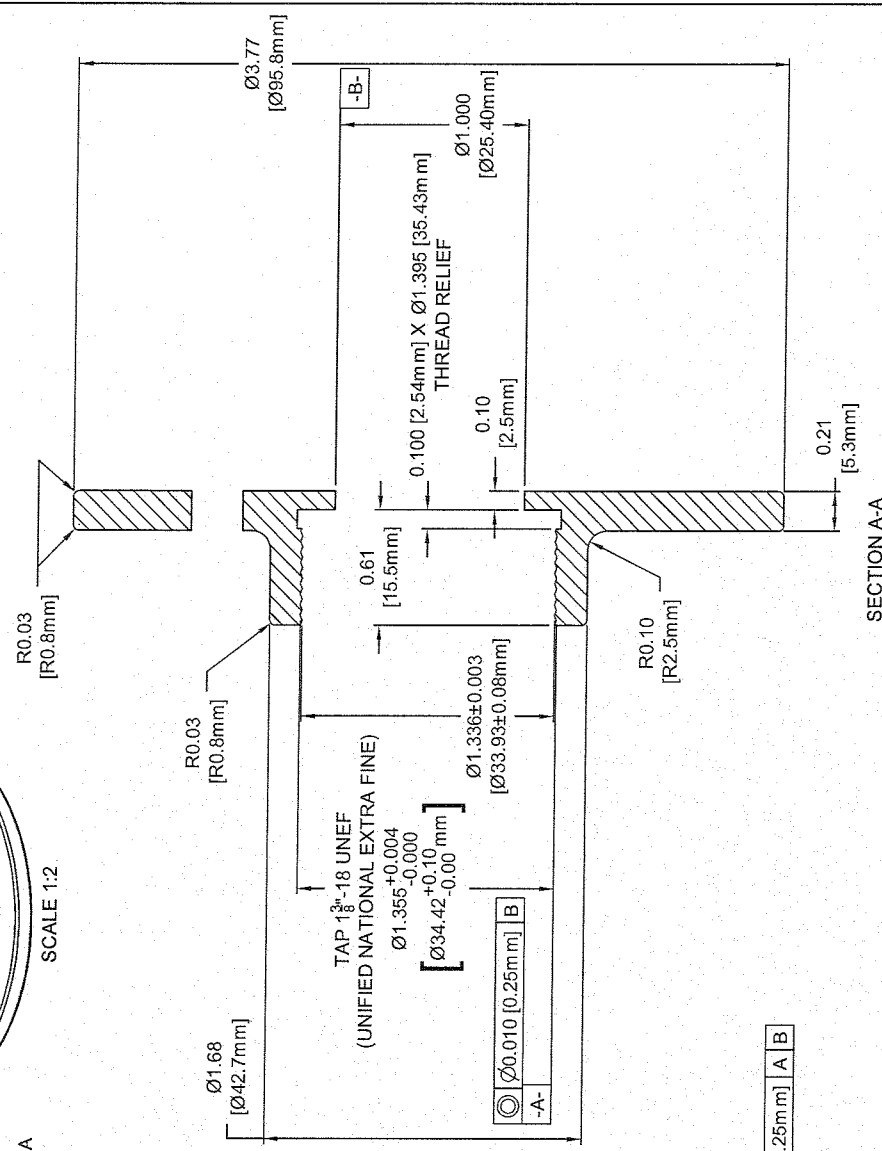
FINISH: BLACK SEMI-SANDING POWDER COATING EXCEPT ON THREAD SURFACES.

ESTIMATED WEIGHT: 0.23lb [0.10kg]

DISCLAIMER:

This document contains confidential and proprietary information of Eminence Speaker L.L.C. and neither it nor the information contained therein shall be disclosed or duplicated or used by others without the express written consent of Eminence Speaker L.L.C.

ALL SAMPLES AND PRODUCTION QUANTITIES OF THIS COMPONENT MUST BE ROHS COMPLIANT



SECTION A-A

ANY REVISIONS TO THIS PRINT MUST BE CARRIED OUT ON PARENT MODEL

		Eminence Speaker L.L.C. Eminence, KY	
		Title ALUMINUM SCREW-ON TO BOLT-ON ADAPTER	Date Issue 7-03-12
Drawing Units INCH/[MILLIMETER]	Drawn By: KYLE HEIGHTCHEW	Initiated By: MATT MARCUM	Part / Dwg NO. 55024
THIRDDANGLE PROJECTION		Scale 1:1	REV
TOLERANCES (EXCEPT AS NOTED)			
2 PLC. DECIMAL INCHES ±0.01	1 PLC. DECIMAL [mm] ±0.3		
3 PLC. DECIMAL INCHES ±0.005	2 PLC. DECIMAL [mm] ±0.13		
ANGULAR ±2°			