

### KEY FEATURES

- Excellent power handling (150 W RMS)
- High mechanical resistance fiber glass cone
- Designed for subwoofer and woofer applications

### TECHNICAL SPECIFICATIONS

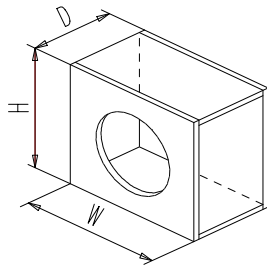
Nominal diameter	200 mm. 8 in.
Nominal impedance	4 ohms
Power handling / Program power	150 W RMS / 300 W
Sensitivity	89 dB 1w @ 1m
Frequency range	35 - 1500 Hz
Voice coil diameter	38.5 mm. 1.5 in.
Bl factor	7.7 N/A
Moving mass	0.034 Kg.

### THIELE-SMALL PARAMETERS

Resonance frequency, fs	42 Hz
D.C. resistance, Re	3.5 ohms.
Mechanical quality factor, Qms	4.46
Electrical quality factor, Qes	0.52
Total quality factor, Qts	0.47
Equivalent air volume to Cms, Vas	28 l
Efficiency, ηo (%)	0.4
Effective surface area, Sd	215 cm <sup>2</sup>
Maximum displacement, Xmax	4 mm.
Displacement volume, Vd	86 cm <sup>3</sup>
Voice coil inductance, Le @ 1 kHz	1 mH

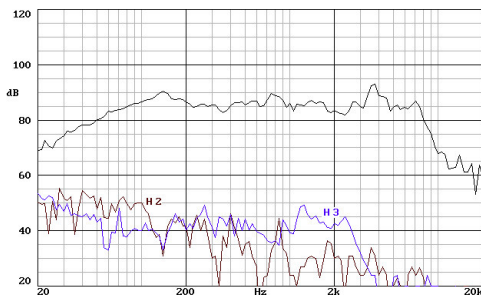
### CLOSED BOX

Vol = 18 liters 0.65 ft<sup>3</sup>  
 H = 280 mm. 11.02 in.  
 W = 410 mm. 16.14 in.  
 D = 240 mm. 9.45 in.  
 Wall thickness = 19 mm. 0.75 in.



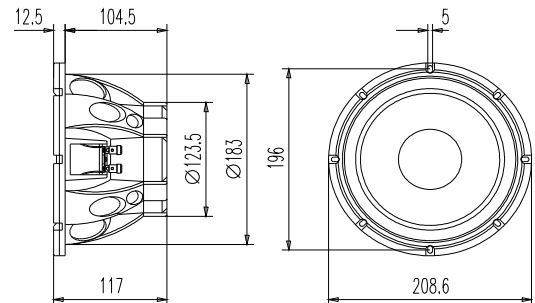
Note: the dimensions are external

### FREQUENCY RESPONSE



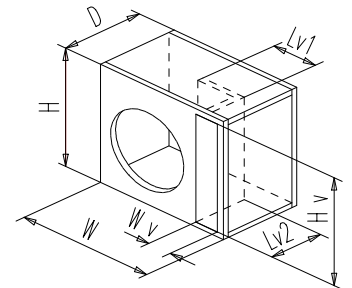
Note: on axis frequency response measured with loudspeaker standing on infinite baffle in anechoic chamber, 1w @ 1m.

### DIMENSION DRAWINGS



### VENTED BOX

Vol = 31 liters 1.10 ft<sup>3</sup>  
 H = 280 mm. 11.02 in.  
 W = 700 mm. 27.56 in.  
 D = 230 mm. 9.06 in.  
 Wall thick. = 19 mm. 0.75 in.  
 Hv x Wv = 242 mm. x 50 mm.  
 9.53 in. x 1.97 in.  
 Lv1 = 422 mm. 16.61 in.  
 Lv2 = 123 mm. 4.84 in.



Note: the dimensions are external

### FREE AIR IMPEDANCE

